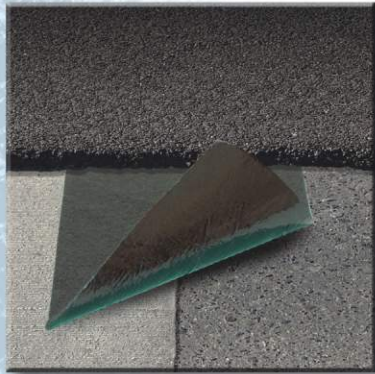


GeoTac is a peel-and-stick waterproofing membrane designed specifically as a moisture barrier. It prevents water permeation or penetration through pavement surfaces and subsequent damage that moisture causes. GeoTac can be quickly installed with basic labor. GeoTac is high caliper and uses a full modified SBS asphalt mastic applied to a non-woven polyester geotextile.



GeoTac is particularly suited for the following applications:
 • Bridge Decks • Waterproofing Highways • Shoulder Joints prior to overlay

Waterproofing Membranes

GeoFilm is a peel-and-stick waterproofing membrane designed specifically as a moisture barrier. It prevents water penetration and subsequent moisture damage. GeoFilm represents a second generation peel-and-stick waterproofing system employing the latest asphalt technology and an adhesive formulation made specially to tenaciously bond to clean, dry surfaces.



Applications particularly suitable for GeoFilm include:
 • Box Culverts • Retaining Walls • Abutment Backwalls
 • Concrete Pipe Joints • Manholes • Headwalls • Median and Paved Shoulder Inlets • Catch Basins • Barrier Median Inlets
 • Foundations



PavePrep is a high density mastic laminated with a tough woven polyester designed specifically to withstand the loads encountered by highway traffic and stress concentrations at pavement joints and cracks. Once applied to these distressed areas, PavePrep's dense and flexible

mastic reduces the tendency for cracks to reflect through the overlay by dispersing the pavement stress.

PavePrep installation is fast and economical requiring no special equipment. Unroll at the job site and apply. Use PavePrep on milled and unmilled surfaces with the application of an AC tackcoat.

PavePrep SA (Self Adhesive) comes with a peel-and-stick adhesive on the application side and does not require a tackcoat for most surfaces.

PavePrep performance is optimized on road surfaces that do not exhibit structural deficiencies or drainage problems. For complete details on PavePrep application thoroughly read the application instructions.



ISAC isolates the immense strain, impact loading and movement deflections that are created by airplane take-offs and landings making it an ideal interlayer with overlays for airport runway application. Bridge decks and highways will benefit from ISAC's

geosynthetics and asphalt mastic material that will create an effective, durable, and long lasting water barrier, preventing water and de-icing salts from penetrating into the sub-base.

ISAC's high-strength, impervious interlayer prevents moisture penetration to the most critical areas of concrete: the concrete joints and cracks. In colder areas ISAC will prevent tenting, this is where water freezes in a joint or crack and heaves the pavement.

Highly effective stress relief interlayers.

Additional Crafcro Products

Crack and Joint Sealant

Crafcro formulates a wide variety of joint and crack sealants that meet and exceed Federal and State specifications. All Crafcro Sealants are guaranteed from start to finish. Crafcro has the broadest line of sealant in the industry making Crafcro your "one-stop shop" for all your sealant requirements. With four manufacturing facilities across the United States Crafcro guarantees efficient and timely shipping, supplying customers with product on-time, every time.

Pavement Joint Adhesive

Crafcro Joint Adhesive is a unique polymerized asphalt product that is applied to the longitudinal cold joint interface between hot mix asphalt paving passes. A thin layer applied to the interface bonds less dense or segregated material together and waterproofs the joint apex, which prevents raveling and crack formation.

Spray Injection Patcher

The Crafcro Spray Injection Patchers are the most cost effective repair systems for pothole repair today. Distressed pavements are cleaned, tack coated, and filled in minutes by one continuous operation. This system can be used year round and is an ideal addition to your pavement preservation system.

PolyPatch

Crafcro PolyPatch is a unique blend of polymer modified asphalt and select aggregate specifically designed for repairing pavement distresses too large for crack sealing and too small for re-paving.

Loop Sealant

Crafcro Loop Sealant is widely accepted for use in sealing traffic intersection loop detectors. Crafcro Loop Sealant provides 100% encapsulation of the sensor wires. Applicator equipment also available.

Marker Adhesive

Both Crafcro Standard and Flexible Marker Adhesive materials assure marker buttons and lane reflectors stay where they are placed. Standard and Flexible Marker Adhesives are hot-applied bituminous based products that are accepted worldwide. Applicator equipment also available.

Roofing & Waterproofing

Crafcro supplies a variety of bulk and packaged asphalt material used in the production of asphalt shingles, in the construction of built up roofing systems and for structural waterproofing. Applicator equipment also available.

TechCrete

Crafcro TechCrete is the flexible solution for concrete repair and is a proven hot pour repair that is different from all conventional rigid repair methods. Once in place TechCrete will move with the pavement and will not de-bond or crack. With Crafcro TechCrete it's a one time fix.

Your local Crafcro representative:

www.crafcro.com

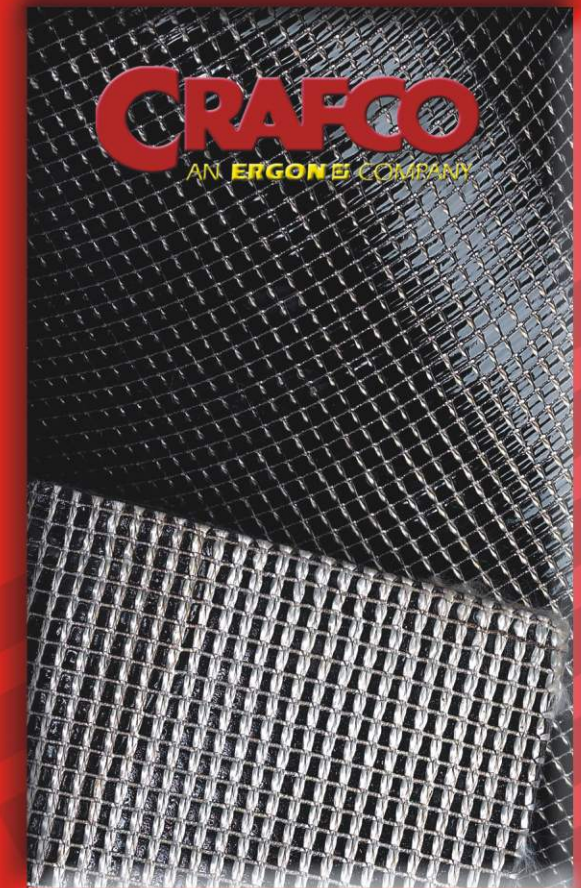
For more information on Crafcro products contact your local Crafcro Distributor or call:

800-528-8242

420 N. Roosevelt Ave.
 Chandler, Arizona 85226, USA
 Phone 602-276-0406
 Fax: 480-961-0513



Geo Composites



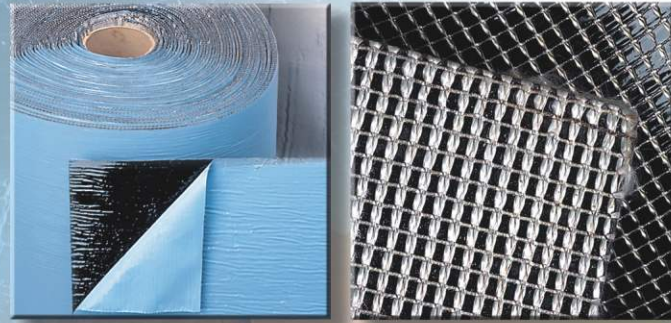
*Reflective Crack Control
 Stress Relief Interlayer
 Waterproofing Membranes*

The Geo Composite Advantage

Crafco Geo Composites will effectively retard and control reflective cracking in asphalt overlays by dispersing stress induced by thermal expansion and contraction.

Advantages

- Provides a stress relief layer
- Significantly reduces reflective cracking
- Lowers pavement maintenance costs
- Easy installation
- Minimal traffic disruption
- Reduces further structural deterioration
- Reduces moisture penetration
- Increases overlay life
- Waterproofs



PavePrep

ISAC

Ideally used on Airport Runways, Bridge Decks, and Highways alike.

Combine PavePrep & PavePrep SA with your crack and joint sealing operation for superior performance.



The leading Geo Composite membranes since 1982

PavePrep SPECIFICATIONS

Property	Value	Test Method
Cold Flex	No cracking or separation of fabric	ASTM D146(modified)
Tensile Strength (Peak)	2,000 psi minimum	ASTM D412(modified)
Elongation (@ Peak Tensile)	10% minimum	ASTM D412(modified)
Weight	0.9 lbs/ft ² typical	N/A
Density (mastic)	80 lbs/ft ³ minimum	ASTM D70
Thickness	0.135 inches typical	ASTM D1777
Thickness Retention	75% minimum retained after loading	ASTM D395(modified)
Absorption (mastic)	1 % maximum	ASTM D517
Brittleness	Passes	ASTM D517
Softening point (mastic)	210° F-230° F (99° (-110° C)	ASTM D36

PavePrep SA SPECIFICATIONS

PavePrep SA (Self adhesive) eliminates the need for a tack coat for application in most cases. Simply remove the liner, place PavePrep SA with the adhesive side down, and roll in tension onto the surface to be treated.

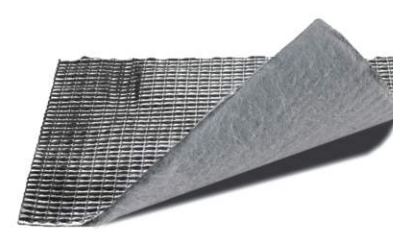
Property	Value	Test Method
Cold Flex	No cracking or separation of fabric	ASTM D146(modified)
Tensile Strength (Peak)	2,000 psi minimum	ASTM D412(modified)
Elongation (@ Peak Tensile)	10% minimum	ASTM D412(modified)
Weight	0.9 lbs/ft ² typical	N/A
Density (mastic)	80 lbs/ft ³ minimum	ASTM D70
Thickness	0.135 inches typical	ASTM D1777
Thickness Retention	75% minimum retained after loading	ASTM D395(modified)
Absorption (mastic)	1 % maximum	ASTM D517
Brittleness	Passes	ASTM D517
Softening point (mastic)	210° F-230° F (99° (-110° C)	ASTM D36

PavePrep

12" (30cm)	X 100' (30.5 m)
18" (45cm)	
20" (50cm)	
24" (60cm)	
36" (90cm)	X 50' (15.2 m)
40" (100cm)	
48" (120cm)	

PavePrep SA

12" (30cm)	X 100 (30.5 m)
18" (45cm)	
20" (50cm)	
24" (60cm)	
36" (90cm)	X 50' (15.2 m)
40" (100cm)	
48" (120cm)	



ISAC SPECIFICATIONS

Property	Value	Test Method
Cold Flex	No cracking or separation of fabric	ASTM D146(modified)
Tensile Strength (Peak)	4,000 psi minimum	ASTM D412(modified)
Elongation (@ Peak Tensile)	10% minimum	ASTM D412(modified)
Weight	0.76 lbs/ft ² typical	N/A
Density (mastic)	69 lbs/ft ³ minimum	ASTM D70
Thickness	0.15 inches typical	ASTM D1777
Resistance to Puncture	5,000 lbs. psi typical	ASTM E-154-93
Absorption (mastic)	1 % maximum	ASTM D517
Brittleness	Passes	ASTM D517
Softening point (mastic)	210° F-230° F (99° (-110° C)	ASTM D36

Width	Length	Other roll widths and lengths available upon request. Pavement conditions will vary, consult your Crafco representative for width recommendations.
36" X	50'	
18" X	50'	

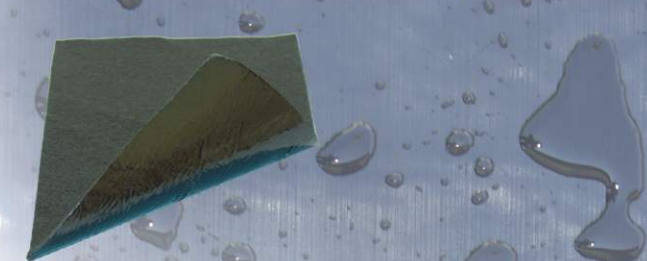
ISAC reduces overlay thickness and extends the life of overlays.

PavePrep General Guidelines

Joint/Crack Size-Movement	Recommended Material Width
up to 1/8"	12" - 18"
1/8" - 1/4"	18" - 24"
1/4" - 1/2"	18" - 36"
1/2" - 3/4"	24" - 48"
3/4" - 1" +	36" - 48"



- To maximize effectiveness, pavement joints should be cleaned or routed and sealed before the application of PavePrep.
- PavePrep will effectively defer pavement reflective cracking.
- Variables affecting reflective cracking:
 - Width of PavePrep installed
 - Amount of thermal movement
 - Space between pavement cracks and joints
 - Thickness of overlay
 - Kind and quality of overlay



Geo Film SPECIFICATIONS

Property	Value	Value
Caliper (thickness)	0.060 inches	ASTM D1777
Pliability (over 1/4" mandrel; 180°F bend @ -25°F)	No effect	ASTM D146 Modified
Permeance	0.10 (MAX) perms	ASTM E96, Method B
Tensile Strength, Membrane (psi)	250 Min.	ASTM D412 (DieC) Modified
Tensile Strength, Film (psi)	4000 Min.	ASTM D412 (DieC) Modified
Water Absorption	0.2% by Weight, Max.	ASTM D570
Elongation (ultimate failure of rubberized Asphalt)	300% Min	ASTM D412 (DieC) Modified
Puncture Resistance	40 lbs. Min.	ASTM E154
Exposure to Fungi in Soil	No effect after 16 weeks	GSA-PBS 07115

Width	Length
12", 20", 24" X	100'
36", 40" 48" X	50'

Geo Tac SPECIFICATIONS

Property	Value	Value
Caliper (thickness)	0.080 inches	ASTM D1777
Grab Tensile Strength	50 (Min.) Lbs/in. Min.	ASTM D4632
Puncture Resistance	200 lbs. min.	ASTM E154
Permeance	0.10 (MAX) perms	ASTM E96, Method B
Elongation	50% min.	ASTM D4632
Pliability (2" Mandrel; 180°F bend @ -25°F)	No cracks in fabric or Rubberized asphalt.	ASTM 146 (modified)

Width	Length
36" X	48'

