

# EZ Series II Melter/Applicator



**CRAFCO**<sup>®</sup> **INC**  
**PRESERVATION PRODUCTS**

**PAVEMENT**

Delivering Confidence Through Innovation, Quality and Value Since 1976

# EZ SERIES II MELTER/APPLICATOR

## Engineered Performance Design

Crafco EZ Series II Melter/Applicators **Engineered Performance** answer today's challenges that have developed from higher energy costs and smaller budgets. The EZ Series II machines exceed all expectations, quickly and economically. No other machine on the market today can match Crafco's Engineered Performance Machines.

**Engineered Efficiency.** The heat transfer profile of these units is second to none, using less fuel to heat each pound of sealant. Utilizing a heat tower inside the sealant tank the EZ Series II Melters achieve over 95% heat efficiency. With the incorporation of larger mixer paddles, turning at an optimal speed, the heat is transferred into the sealant faster than ever before. A rugged 2-inch sealant pump, coupled with true on demand pumping,

provides the EZ Series II with the power to apply hot pour, fiber, or coal tar sealants effectively and efficiently with the added benefit of a longer pump life and lower maintenance cost.

**Engineered Options and Features.** Standard Engineered Features make the operation of this melter the safest and easiest machine to operate. Many other features reduce labor and operating costs. The most impressive features of the EZ Series II are the Engineered Options. Design the machine you want with these options. For example, add an optional industrial air compressor and save the cost of running an additional engine and tow vehicle, saving time, money and people costs. The EZ Series II has over 20 available options.

## Engineered Safety



The EZ Series II is loaded with standard safety features designed to protect the operator and the public. Engineered features, such as the autoloader, keep the operator clear of hot sealant and add efficiency to the process. Rear controls keep the operator away from traffic on both sides of the unit. The self adjusting hose boom reduces operator fatigue and allows for a larger sealing radius. Anti splash lids with safety shut off's protect the operator. Review the innovative features of the EZ Series II and you will find this machine to be the most safely engineered melter available.



- 1 Anti-Splash Box\*
- 2 Angled Loading Lid
- 3 Low Profile Loading Height
- 4 Engine Low Oil Pressure & High Water Temp Shut Down
- 5 Rear Control Box/Digital Gauges
- 6 Lid Agitator Shut Off Switch
- 7 Easy Load Lid
- 8 Sliding Hose Boom
- 9 Autoloader\*
- 10 Hose Cover
- 11 Engine Cover\*
- 12 Hitch Extension\*
- 13 Burner Placement
- 14 Low Curb Height
- 15 Heat Transfer Overflow Tank

*Never purchase a jacket melter that has no heat transfer oil overflow tank. Without it ground contamination can occur.*

*\* Optional Item*

**CRAFCO ENGINEERED OPTIONS AND FEATURES REDUCE OPERATING AND LABOR COSTS**

# “The High Efficiency Melter”

## EZ SERIES II 500

Available in two base configurations

Standard Base (non electric hose) - Part No. 46100SB

Electric Base (electric hose) - Part No. 46100EB



The EZ Series II 500 is designed to be maneuverable and easily towed. This is the perfect machine for the mid-size city, county, or contractor. The superior heating and recovery time make the EZ Series II 500 ideal for that parking lot or the city street when time is most important.

## EZ SERIES II 1000

Available in four base configurations

Standard Base (non electric hose) - Part No. 46200SB

Standard Compressor - Part No. 47600SC100

Electric Base (electric hose) - Part No. 46200EB

Electric Compressor - Part No. 47600EC100

The EZ Series II 1000 has a 2" sealant pump, corrosive resistant tank jacket, two part epoxy paint and one piece frame construction. Choose the configuration and options that are right for you by consulting with your local Crafcro representative.



Low Profile/Low Center of Gravity



# "Highest Volume, Highest Production"

## EZ SERIES II 1500

Available in six base configurations

Standard Base (non electric hose) - Part No. 46400SB

Standard Compressor - Part No. 47800SC100

Electric Base (electric hose) - Part No. 46400EB

Electric Compressor - Part No. 47800EC100

Double Pump Standard Base (non electric hose) - Part No. 46500SB

Double Pump Electric (electric hose) - Part No. 46500EB



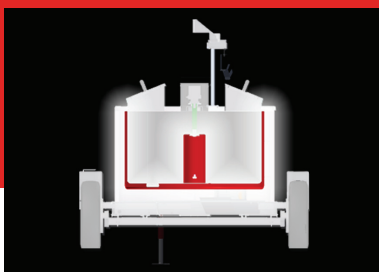
The EZ Series II 1500 is available in a single hose configuration or the first truly independent twin hose system. The twin hose unit features separate controls, two jacketed pumps, two hoses, two hose booms and two wands that all work independently.

## Specifications

	EZ Series II 500 - Part No. 46100SB	EZ Series II 1000 - Part No. 46200SB	EZ Series II 1500 - Part No. 46400SB
Dimensions	172.75"L / 72.25"W / 86.88"H	193.25"L / 91.25"W / 81.00"	200"L / 92.75"W / 92.31"H
Shipping Weights	4,180 lbs / 1,896 kg - Actual	5,632lbs / 2,507kg - Actual	6,700lbs / 3,039kg - Actual
Gross Weight	5,480lbs. / 2,486 kg - Approx	7,753lbs / 3,526kg / Approx.	10,600lbs / 4,808kg - Approx.
Material Capacity	132 Gal. / 500 liter	265 gal / 1000 liter	396 gal. / 1500 liter
Melt Rate	1,100 lbs/hr	2,100 lbs/hr	2,800 lbs/hr
Heat Transfer Oil	21.5 Gal / 80 liter	36.5 gal / 126.8 liter	45.5 gal / 170.34 liter
Tank Construction	Double Boiler w/ Center Column	Double Boiler w/ Center Column	Double Boiler w/ Center Column
Tank Opening/Loading Door(s)	(1) 14" x 18" / 355.6mm x 457.2mm	(2) 14" x 18" / 355.6mm x 457.2mm	(2) 18" x 24" / 457.2mm x 609.6mm
Loading Height	53.0" / 134.5cm	56" / 143.5cm	56" / 143.5cm
Heat Input	250,000 Btu	270,000 Btu	330,000 Btu
Diesel Fuel Capacity	30 Gal. / 113.5 Liter	30 Gal. / 113.5 Liter	30 Gal. / 113.5 Liter
Propane Capacity	N/A	N/A	N/A
Hydraulic Oil Capacity	24 gal. / 90.8 Liter	24 gal. / 90.8 Liter	24 gal. / 90.8 Liter
Engine Standard	Three cyl. Isuzu Mod 3CB1 25.4 BHP @ 3,000RPM	Three cyl. Isuzu Mod 3CB1 25.4 BHP @ 3,000RPM	Three cyl. Isuzu Mod 3CB1 25.4 BHP @ 3,000RPM
Engine Option (w/Compressor)	N/A	Four cyl. Isuzu Mod 4LE2T 48 BHP @ 2,400RPM	Four cyl. Isuzu Mod 4LE2T 48 BHP @ 2,400RPM
Axle Capacity	Single 5,200lb. / Torsional	Dual 5,200lb. / Torsional ea.	Dual 6,000lb. / Torsional ea.
Tires	ST255/75 R15	ST255/75 R15	ST255/75 R16
Air Compressor (Optional)	N/A	100CFM@125PSI	100CFM@125PSI
Surface Area Material Tank	4,810in² 30,552cm²	7,406in² 47,780cm²	9,448in² 60,954cm²
Surface Area Oil Tank	5,011in² 31,829cm²	7,676 in² 49,522 cm²	9,921 in² 64,006 cm²
Ratio of Tank Surface Area	1.04:1	1.04:1	1.05:1
Controls	Digital	Digital	Digital
Control Location	Rear Control Station	Rear Control Station	Rear Control Station
Hose Style	Standard or Electric	Standard or Electric	Standard or Electric
Wand Style	Standard or Electric	Standard or Electric	Standard or Electric
Hose Compartment	Yes	Yes	Yes
Material Recirculation	Yes	Yes	Yes
Boom	Sliding Bearings	Sliding Bearings	Sliding Bearings
Burner Box	Removable From Side	Removable From Side	Removable From Side

For bid specifications go to  
**crafcro.com**

**(800) 528-8242**



### HIGH EFFICIENCY HEAT TOWER

Utilizing a heat tower inside the sealant tank the EZ Series II Melters achieve over 95% heat efficiency.

## Engineered Performance Features

### HOSE BOOM

Self adjusting sliding boom increases operator head clearance to 6'5", allowing for 7' of travel and increased hose mobility.

### INCREASED WORKING AREA

15' hose = 1019 Sq. Ft.  
18' hose = 1357 Sq. Ft.  
20' hose = 1452 Sq. Ft.



### Webbed Reinforced Welded Frame

Single piece constructed frame for balance, durability and towing ease.



### Rear Control Box

All controls are in one location at the rear of the unit. Functions include the engine controls, heated hose controls with lockouts, and pump flow control.



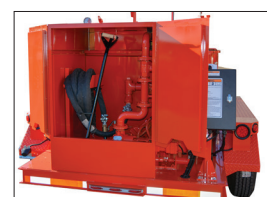
### Removable Burner Box

Side access for easy servicing and new high efficiency insulation.



### Recirculation Shoe Box

Provides material recirculation when needed on standard hose or operators discretion on heated hose.



### Heat Chamber

Features a heat damper to control the oven temperature. 20 GPM 2" sealant pump.

## Engineered Performance Options

Crafcro offers many Engineered Performance Options to increase production, save labor and lower operating costs.

All of the EZ Series II units have been engineered with a large variety of options like an autoloader, compressor, light bar or fire extinguisher. These options will enhance production, while increasing safety and security.

Engine covers and battery boxes protect the engine from the elements and add security. The EZ autoloader increases production, adds safety and decreases operator fatigue. The overnight heater is an on-the-job must if you want to reduce start up time. The light bar is essential for added safety for directing traffic and increasing driver awareness.

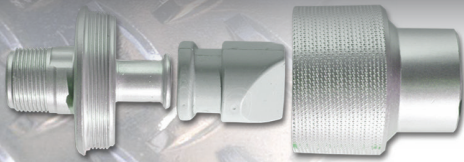


- Engine cover
- Material Gravity Feed
- Arrow Board Kit
- Surge Brakes
- Engine w/ Guages
- Material Autoloader
- Air Compressor
- Custom Paint
- Hitch Selection
- Electric Plug Selection
- Hitch Extension
- Cab Brake Control
- Break-away Battery w/charger
- Locking Battery Box
- Light Bar
- Overnight Heater
- Fire Extinguisher - 10 or 20lb
- Tool Box
- Safety Hooks
- Mud Flaps
- Spare Tire Kit
- Strobe Light
- 100lb propane tank kit



# Engineered Tools

## Sealing Tips and Material Handling Tools



### Super Shot Drip Stopper

Use with Crafcro Super Shot sealing tip. Stops sealant drip once wand trigger is released.

**PN# 27114** Tip Adapter

**PN# 50270** Duckbill Valve

**PN# 27115** Shroud - Tip Adapter



Swivel Applicator

### Swivel Applicator

Use with Super Shot Melter & E-Z Pour Melters with or w/o Drip Stopper.

**PN# 27120** 3" Swivel Applicator

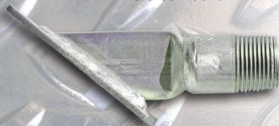
**PN# 27130** 4" Swivel Applicator



Crafcro Duckbill

### Crafcro Duckbill PN# 50270

Use with Super Shot Melter wands to prevent dripping of material.



Crafcro Sealing Foot / Flush

### Crafcro Sealing Foot / Flush

Used for random asphalt and concrete cracks.

**PN# 27154** Sealing tip/ft assembly 1/4" flush

**PN# 27155** Sealing tip/ft assembly 3/8" flush



Crafcro Sealing Foot / Protruded

### Crafcro Sealing Foot / Protruded

Used for straight asphalt and concrete joints.

**PN# 27159** Sealing tip/ft assembly 1/4" protruding

**PN# 27160** Sealing tip/ft assembly 3/8" protruding



Crafcro Joint Sealing Tip

### Crafcro Joint Sealing Tip

Use for straight asphalt and concrete joints.

**PN# 27146** Sealing tip assembly 1/4"

**PN# 27147** Sealing tip assembly 3/8"



Crafcro Round Sealing Tip

### Crafcro Round Sealing Tip

Multi-purpose random cracks and joints.

Use with a squeegee for most applications.

**PN# 27170** Sealing tip assembly 3/8"

**PN# 27171** Sealing tip assembly 1/2"



Crafcro Applicator Disk

### Crafcro Applicator Disk

Used for overbanding, great labor saver.

**PN# 27162** 3" Disk Assembly

**PN# 27163** 4" Disk Assembly

**PN# 27164** 6" Disk Assembly

### Crafcro Heavy Duty Squeegee w/Aluminum Handle

**PN# 27199**

Use for leveling crack sealant and where a sealant over band is recommended.



Crafcro Heavy Duty Squeegee

### Crafcro Replacement Blade

**PN# 27195** 4" x 18" x 3/8"

### Crafcro Heavy Duty Compact Squeegee w/ Aluminum Handle

**PN# 27245**



Crafcro Heavy Duty Compact Squeegee

### Crafcro Heavy Duty Compact Squeegee w/ Wooden Handle

**PN# 27245W**

Use for leveling crack sealant and where a sealant over band is recommended.



Crafcro Pour Pot with Wheels

### Crafcro Replacement Blade

**PN# 27241** 2-1/2" x 17" x 3/8"

### Crafcro Pour Pot with Wheels

**PN# 40200**

Use to apply a uniform band of sealant to a crack or joint. Wheeled for ease of use. Gravity feed with shut off lever.



Crafcro Hand Held Pour Pot

### Crafcro Hand Held Pour Pot

**PN# 40201**

For application of thin crack sealant to a joint or crack. Gravity feed with shut off lever.

**Crafcro Detack** is an economical, biodegradable liquid from Crafcro that eliminates sealant tack when sprayed onto freshly applied hot pour sealant.



Your local Crafcro Representative: