

PolyPatch™ & Mastic One™

Asphalt Repair Products



**PolyPatch & Mastic One are
the right products for the job!**

*For cracks too large for crack sealing
and too small for repaving.*

FEATURES

- Flexible
- Durable (supports heavy loads)
- Waterproof
- Bonds to AC & PCC pavement
- Long-term solution (5+ years performance)
- Engineered design in premeasured package for consistency and maximum performance; no field blending
- Easy installation
- Reduce crew and equipment, and no compaction compared to hot mix asphalt

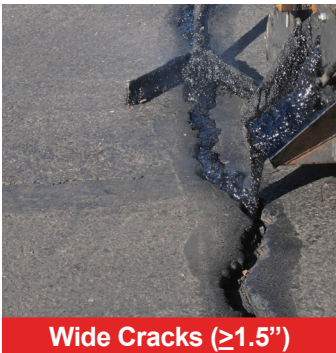
CRAFCO®
INC
PRESERVATION PRODUCTS PAVEMENT

Delivering Confidence Through Innovation, Quality and Value Since 1976

Asphalt Repair Products



Pothole Repair



Wide Cracks ($\geq 1.5"$)



Surface Repair



Bridge Deck Approach



Leveling Manholes

Crafco PolyPatch products are hot-applied, pourable, self-adhesive patching materials used for preservation, maintenance and repair of asphalt and Portland cement concrete pavements and bridge deck surfaces. PolyPatch products are composed of highly modified polymer asphalt binder and durable lightweight construction aggregate. These products are formulated for distresses larger than those typically repaired by crack or joint sealing, but smaller than those requiring remove and replace patching procedures. The unique design features of PolyPatch products produce materials which are adhesive, flexible, and resistant to vehicle loadings. PolyPatch products are produced in two grades: PolyPatch and PolyPatch Fine Mix. PolyPatch has larger aggregate for use in deeper installations. PolyPatch Fine Mix used smaller aggregate for thinner repairs and feathered edges. PolyPatch products are supplied in solid form in 30 lbs. (13.6 kg) (approx. weight) boxes containing pre-measured binder and aggregate. PolyPatch and PolyPatch Fine Mix have been quality Crafco products for over 15 years.

Crafco Mastic One is similar to PolyPatch Fine Mix but is compounded with standard weight aggregate and packaged in 40 lb. (18.1 kg) boxes.

Ideally used for:

- Filling wide cracks and joints
- Filling potholes
- Sealing utility cuts
- Leveling depressed thermal cracks
- Repairing deteriorated longitudinal joints
- Skin patch repairs
- Leveling manhole covers
- Leveling bridge deck approaches
- Pretreatment of fatigue cracked areas prior to surface treatments
- Filling spalls, popouts, and corner breaks